

Be Still

Lyrics from From the Ends of the World;
Cláudio Carvalhaes, Editor

Music by Billy Myers

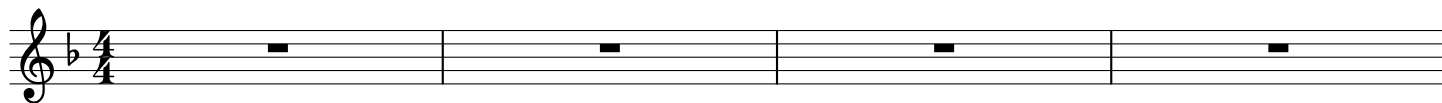
$\text{♩} = 90$ INTRO

CM7

FM7

B♭M7

Gm7



5 CM7 FM7 B♭M7 Gm7 CM7 FM7



Chorus: We cry out to you, the One who says: Hush, here I am your

8 B♭M7 Gm7



God, you'll find me in the joy

10 *f* CM7 N.C.



Solo: Be still, the noise is fright-ening, con-fus-ing and, dis-turb-ing.

12 *subito p* CM7

FM7

B♭M7

Gm7



Chorus: Hush, here I am your God, you'll find me in the quest-ions

15 *f* CM7 N.C.



Solo: The in-diff'-rence of the pio-us breeds a deaf'-ning sil-ence.

17 *subito p* CM7

FM7

B♭M7

Gm7



Chorus: Hush, here I am your God, you'll find me in the noise.

20 *f* CM7 N.C.



Solo: The ev-il one has set his foot up-on me.

22 *subito p* CM7

FM7

B♭M7

Gm7



Chorus: Hush, here I am your God, you'll find me in the pain.

25 CM7 FM7 B♭M7 Gm7

We cry out to you, the One who says:

Detailed description: This musical staff covers measures 25 and 26. It begins with a treble clef, a key signature of one flat (Bb), and a 4/4 time signature. Measure 25 contains a whole rest followed by a quarter note G4, a quarter note A4, and a quarter note Bb4. Measure 26 contains a quarter note C5, a quarter note Bb4, a quarter note A4, a quarter note G4, a quarter note F4, and a quarter note E4. Chord symbols CM7, FM7, B♭M7, and Gm7 are placed above the staff at the start of measures 25, 26, 26, and 26 respectively.

27 CM7 FM7 B♭M7 Gm7

Hush, here I am your God, you'll find me in the joy

Detailed description: This musical staff covers measures 27 and 28. Measure 27 contains a whole rest followed by a quarter note G4, a quarter note A4, and a quarter note Bb4. Measure 28 contains a quarter note C5, a quarter note Bb4, a quarter note A4, a quarter note G4, a quarter note F4, and a quarter note E4. Chord symbols CM7, FM7, B♭M7, and Gm7 are placed above the staff at the start of measures 27, 28, 28, and 28 respectively.

29 CM7 FM7 B♭M7 Gm7 CM7 FM7

of my peo - ple

Detailed description: This musical staff covers measures 29 and 30. Measure 29 contains a whole rest followed by a quarter note G4, a quarter note A4, and a quarter note Bb4. Measure 30 contains a quarter note C5, a quarter note Bb4, a quarter note A4, a quarter note G4, a quarter note F4, and a quarter note E4. Chord symbols CM7, FM7, B♭M7, Gm7, CM7, and FM7 are placed above the staff at the start of measures 29, 29, 29, 29, 30, and 30 respectively.

32 B♭M7 Gm7 CM7

A - men.

Detailed description: This musical staff covers measures 32 and 33. Measure 32 contains a whole rest followed by a quarter note G4, a quarter note A4, and a quarter note Bb4. Measure 33 contains a quarter note C5, a quarter note Bb4, a quarter note A4, a quarter note G4, a quarter note F4, and a quarter note E4. Chord symbols B♭M7, Gm7, and CM7 are placed above the staff at the start of measures 32, 32, and 33 respectively.